

BASE Line

January/February 2006

Steven M. Baldrige, P.E., S.E.

Todd P. Dwight, S.E.

Frank K. Humay, Ph.D., S.E.

Kylie K. Yamatsuka, S.E.

Evan A. Mizue, S.E.

Daniel R. Popp

Drew Fagent

Jason Pang

Tracy M. Duke

Sandra M. Yonkers

Fe O. Rodillas

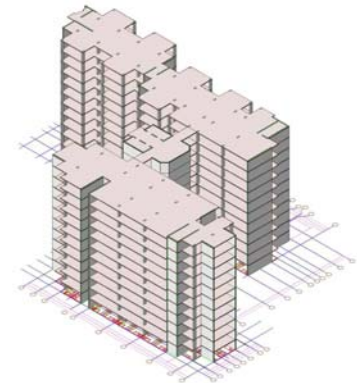
Woo Sung Chang

Aubrey S. Renteria

With the advent of Computer Aided Drafting (CAD) many felt our industry would become more productive. The desired efficiencies however, have not been gained as Architects, Engineers and Contractors our often replicating the electronic documentation of a project. The next evolution of our industry, **Building Information Modeling (BIM)**, is the seamless sharing of a 3D model of a project by the Architect, Engineers, Contractor and the Building Owner which shows promise in reducing the time and cost of a project while increasing coordination and quality.

- Baldrige and Associates has made a commitment to understanding both the potential roadblocks and benefits of BIM. This included attendance in the summer of 2005 at **Stanford University's Center for Integrated Facility Engineering** for a week long course on Virtual Design and Construction in Practice Today.

- Our office is the first firm in Hawaii to implement **Revit Structure**. This powerful tool allows our office to combine 3D modeling for structural analysis with the 3D modeling of the construction documents. An additional benefit to our clients is the ability to provide rapid and accurate quantity estimates for both the budgeting and ordering of materials for a project.



Revit Model of University of Hawaii Dormitories

- **Interoperability** is the integration of the design and construction process. In steel framed construction this is achieved through CIMSteel Integration Standards (CIS/2). BASE is one of only a few engineers across the nation that has interacted electronically with a steel fabricator to successfully complete a project.
- The Nimitz-MacArthur Pacific Command Center is one of the early examples of **Electronic Data Interchange (EDI)**. The only way to achieve the tight Design/Build schedule on this project was through the use of EDI. Our office exchanged the electronic version of the 3D structural analysis model with engineers working in Oklahoma and California to enable the rapid design and coordination of the project. This project was recently recognized with a National Structural Engineering Excellence award for its innovative design approach.

“BASE strives to incorporate the appropriate technologies that can provide added value and benefit to our clients.”

